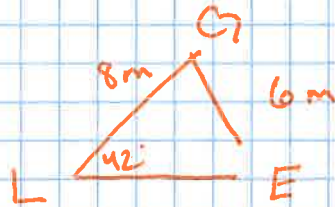


Warm Up 2/6

① Given $\triangle LEG$

$$L = 42^\circ \quad e = 8 \text{ m} \quad l = 6 \text{ m}$$

Find all missing angles.



$$h = 8 \sin 42^\circ = 5.353$$

$$5.353 < 6 < 8$$

2 Δ 's

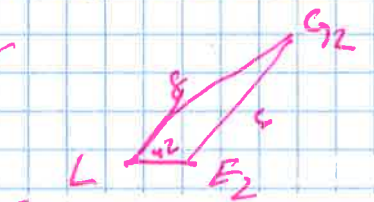
$$\frac{\sin E}{8} = \frac{\sin 42}{6}$$

$$E = \sin^{-1}\left(\frac{8 \sin 42}{6}\right)$$

$$E = 63.148^\circ$$

$$G = 180^\circ - (63.148 + 42)$$

$$G = 74.852^\circ$$



$$E_2 = 180^\circ - 63.148$$

$$E_2 = 116.852^\circ$$

$$G_2 = 180^\circ - (42 + 116.852)$$

$$G_2 = 21.148^\circ$$